

PORTACOUNT® RESPIRATOR FIT TESTER MODEL 8048

RESPIRATOR FIT TESTING
YOU CAN TRUST

The only commercially available instrument in the world that can quantitatively fit test all tight fitting respirator face masks, including all N95, P1 and P2 filtering face piece respirators!

Accept no substitutes . . . choose the original ambient aerosol condensation nuclei counter (CNC) quantitative fit testing instrument, the PortaCount Respirator Fit Tester using N95-Companion™ technology.



PortaCount Model 8048 Includes

- + N95-Companion™ technology
- + Carrying case
- + AC adaptor
- + Alcohol supply (sixteen 30 ml bottles of 99.5% reagent grade isopropanol - enough for ~240 hours of operation)
- + FitPro™ Ultra Software
- + Particle Generator
- + Standard accessory kit (twin tubing, zero filters, spare wicks, alcohol fill capsule and cartridge, USB cable)
- + Filtering Face piece fit testing kit (probe insertion tool, probes, lock nuts, lanyard)

FitPro Ultra Software

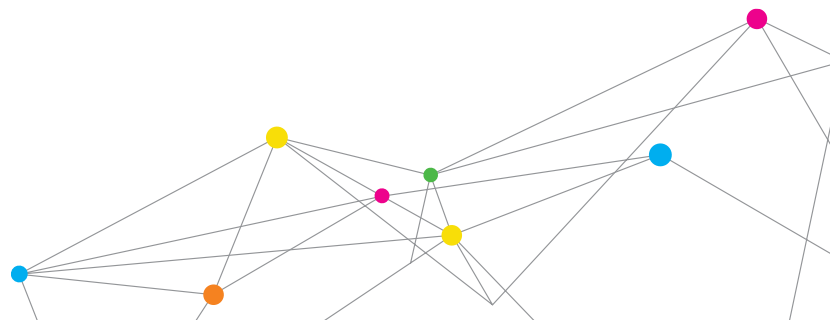
- + New FitPro Ultra fit test software improves efficiency and simplifies fit testing
- + New advanced user interface with intuitive design supporting one-step-to-a-fit test
- + Wireless WiFi communication to leverage the utility of a laptop or tablet
- + Industry First active animations guide the test subject through the fit test exercises to ensure greater compliance
- + Interactive troubleshooting guide
- + Advanced reporting and database management (FitPro Manager Software)
- + Capability to develop custom protocols (FitPro Manager Software)
- + Group fit testing capability to easily manage up to four independent PortaCount fit testers (FitPro Manager Software)

Features and Benefits

- + OSHA, CSA, HSE, and ANSI Compliant for ALL tight fitting respirators, including Series 95, 99, 100, FFP1, FFP2, and FFP3 filtering facepiece respirators
- + Measures fit factors greater than 10,000
- + Computes respirator fit factor using microscopic particles in ambient air
- + Automates fit testing with FitPro Ultra Software or optional FitPro Manager Software
- + Real-Time FitCheck™ feature to train new users and troubleshoot failed fit tests
- + Mask sampling adapter kits enable fit testing in employee's personal respirators
- + Software prints fit test cards with fit test report or on ID cards



UNDERSTANDING, ACCELERATED



SPECIFICATIONS

PORTACOUNT® RESPIRATOR FIT TESTER MODEL 8048

Fit Factor Range

1 to greater than 10,000, 1 to 200 for N95 masks

Typical Fit Factor Accuracy

±10% of reading

Respirator Facepieces that can be Fit Tested

Full-face elastomeric
Half-face elastomeric
NIOSH series-100 filtering-facepiece
NIOSH series-99 filtering-facepiece
NIOSH series-95 filtering-facepiece
Series FFP1, FFP2, FFP3 respirators

Fit Factor Measurement

Direct measurement of fit factor (C_{out}/C_{in})*

Dimensions

4.83 in. x 10.5 in. x 9.46 in. (12 cm x 27 cm x 24 cm)

Weight

Unit Only	7.0 lb. (3.2 kg)
With Standard Accessories and Case	15.35 lb. (6.9 kg)

Power

Autosensing 100 to 250 VAC, 50 to 60 Hz

Flow Rate

Sample	350 cm ³ /min
Total	1000 cm ³ /min (nominal)

Temperature Range

Operation	32 to 100°F (0 to 38°C)
Storage	-40 to 122°F (-40 to 50°C)

Working fluid

99.5% reagent grade isopropanol.
Run time per charge: 6 hr of fit testing operation at 70°F (21°C)

Carrying Case

Dimensions (HWD)	10.0 in. x 20.5 in. x 15.5 in. (25.4 cm x 52.1 cm x 39.4 cm)
------------------	---

Pass/Fail Setting

User-selectable: 0 to 10,000

Factory Recalibration Interval

One year

Warranty

Two years on workmanship and materials.

Communications

WiFi, USB-C

Minimum PC Hardware Requirements for FitPro Ultra Fit Test Software

Windows® 7 (32 and 64 bit), Windows® 8 (32 and 64 bit), or Windows® 10 (32 and 64 bit) operating system
Microsoft.Net version 4 (installation software will install Microsoft.Net if necessary) **Note** – An internet connection is required to install Microsoft.Net
≥ 1 GHz process
≥ 1280 x 800 screen resolution monitor
500 MB free space on hard drive
1 free USB port

Minimum Tablet requirements

Windows® 10 operating system
1 GHz processor
1024 x 768 screen resolution monitor
Minimum screen size 10"
500 MB free space on hard drive
USB port (for initial set up)

Software

FitPro Ultra Software featuring advanced user interface, animated graphics, and interactive troubleshooting guide.

Optional Accessories

Mask Sampling Adapters for select respirator models.
FitPro Manager Software: Advanced data management software including all features of FitPro Ultra basic functionality, plus advanced database management and reporting and asynchronous group fit testing capability.
Microsoft® Surface Pro i5 Tablet (4 GB RAM, 128 GB of storage).
WiFi USB dongle.

*Mask leakage is measured simultaneously while test subject moves and breathes.

PortaCount, TSI, and the TSI logo are registered trademarks, and FitPro, and N95-Companion are trademarks of TSI Incorporated.

Windows is a registered trademark of Microsoft Corporation in the United States and/or other countries.



UNDERSTANDING, ACCELERATED

TSI Incorporated - Visit our website www.tsi.com for more information.

USA	Tel: +1 800 874 2811	India	Tel: +91 80 67877200
UK	Tel: +44 149 4 459200	China	Tel: +86 10 8219 7688
France	Tel: +33 1 41 19 21 99	Singapore	Tel: +65 6595 6388
Germany	Tel: +49 241 523030		